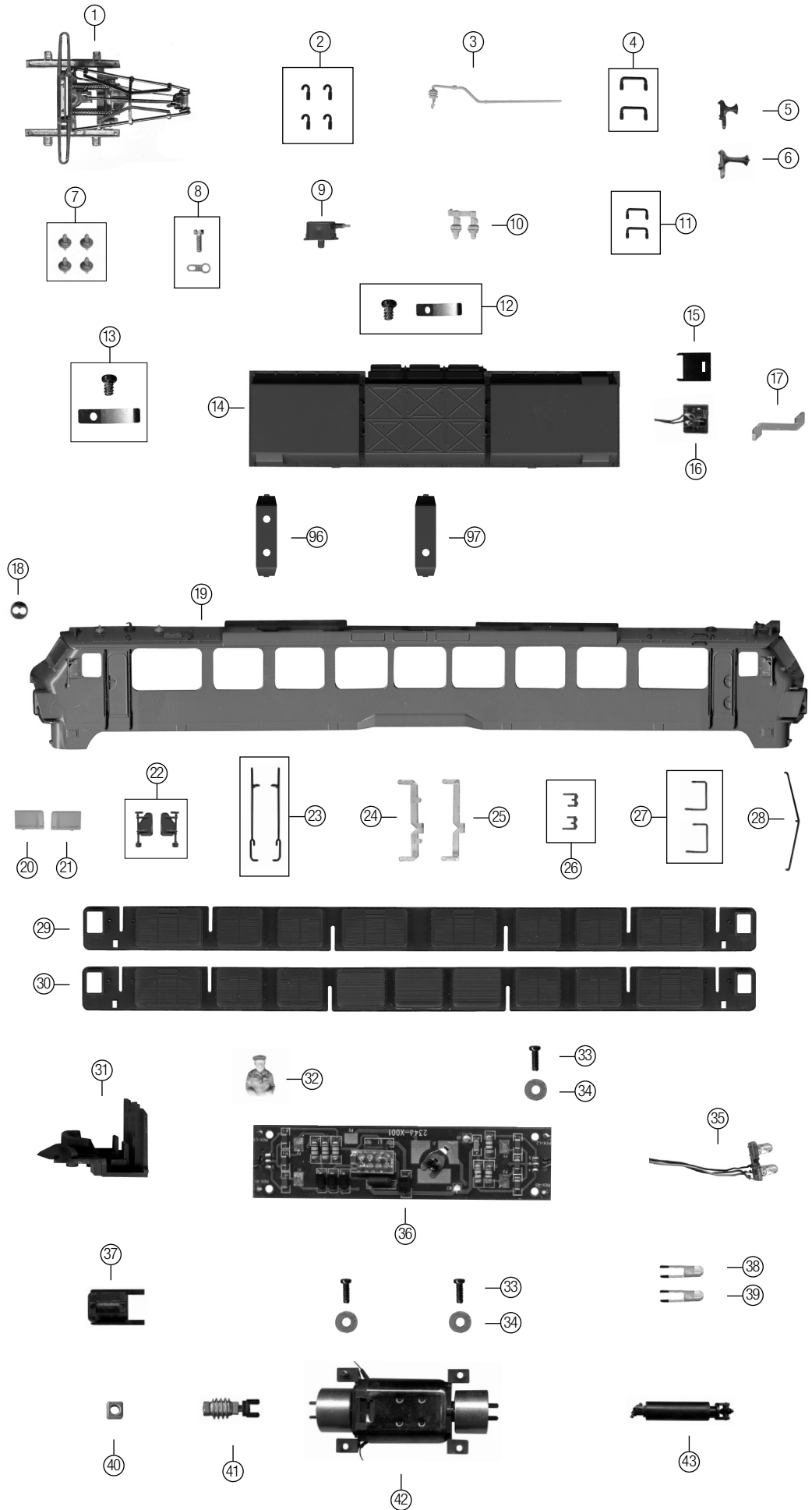


Posición	Descripción	Referencia
1	Pantógrafo Pantograph	7610
2	Argollas Rings	25802D
3	Aislante techo 1 Roof isolator 1	25803
4	Set asideros techo 1 Roof handlers set	25804D
5	Bocina corta Short horn	25805D
6	Bocina larga Large horn	25806D
7	Aislantes del pantógrafo Pantograph isolator	25807
8	Set tornillo y terminal Pantograph support	25808
9	Caja eléctrica Electric box	25809D
10	Aislante techo 2 Roof isolator 2	25810D
11	Set de asideros techo 2 Roof handlers set 2	25811D
12	Contacto pantógrafo Pantograph contact	25812
13	Set tornillo y contacto Screw and contact set	25813
14	Cubierta del techo Roof cover	25814D
15	Caja luz superior Roof light support	25815
16	Luz superior Upper light	25816
17	Difusor superior Upper light bar	25817
18	Foco superior Upper light	25818D
19	Carcasa Body shell	25819F
20	Cristal frontal derecho Front right window	25820D
21	Cristal frontal izquierdo Front left window	25821D
22	Set retrovisores Rear mirror set	25822D
23	Set asideros puerta Door handlers set	25823D
24	Difusor luz blanca White light bar	25824
25	Difusor luz roja Red light bar	25825
26	Set portaseñales Lantern light set	25826D
27	Set asideros bajos Low handlers set	25827D
28	Asidero frontal Front handler	25828D
29	Ventanas laterales derecha Right side window	25829D
30	Ventanas laterales izquierda Left side window	25830D
31	Cabina Cabin	25831D
32	Maquinista Driver	34074
33	Tornillo Screw	25833
34	Arandela Ring	25834
35	Luces frontales Front lights	25835
36	Circuito impreso Printed circuit	25836
37	Tapa sinfin Gear worm lid	25837
38	Led blanco dorado White golden led	25838
39	Led rojo Red led	6817
40	Cojinete del sinfin Worm gear bearing	25840
41	Sinfin Gear worm	25841
42	Motor Motor	25842
43	Cardan Cardan joint	25843
44	Bloque bastidor Underframe	25844D
45	Soporte estabilizador izq. Left stabilizer support	25845D
46	Despósitos Tanks	25846D



Posición	Descripción	Referencia
47	SopORTE estabilizador dch. Right stabilizer support	25847D
48	Manguera 1 Air hose 1	25848D
49	Gancho de husillo Screw coupling	25849D
50	Manguera 2 Air hose 2	25850D
51	Set de mangueras Air hose set	25851D
52	Topes Buffer	25852D
53	Faldón decorativo Snow plough for showing	25853D
54	Topera decorativa Buffer holder for showing	25854D
55	Topera funcional Buffer holder for running	25855D
56	Faldón funcional Snow plough for running	25856D
57	Gancho Hook	25857D
58	Enganche lazo Head hooks with loop	058
59	Brazo enganche Coupling holder	25859D
60	Muelle enganche Coupling holder spring	25860
61	Tapa brazo enganche Coupling holder lid	25861D
62	Tornillo Screw	25862
63	Enganche corto Short coupling	24060
64	Bogie DC DC bogie	25864D
65	Bogie AC AC bogie	25865D
66	Bogie central DC Central DC bogie	25866D
67	Bogie central AC Central AC bogie	25867D
68	Muelle bogie central Central bogie spring	25868
69	Tornillo bogie central Central bogie screw	25869
70	Bogie para tacómetro DC Tacometer DC bogie	25870D
71	Bogie para tacómetro AC Tacometer AC bogie	25871D
72	Cobertura bogie Bogie cover	25872D
73	Cobertura bogie central Central bogie cover	25873D
74	Cobertura bogie tacómetro Tacometer bogie cover	25874D
75	Tacómetro Tacometer	25875D
76	Caja de engranajes Gear box	25876D
77	Eje engranajes Gear axle	25877
78	Engranaje Gear	25878
79	Engranaje Gear	25879
80	Engranaje Gear	25880
81	Rueda con aro DC Wheelset DC with rubber tyre	25881
82	Rueda con aro AC Wheelset AC with rubber tyre	25882
83	Rueda sin aro DC Wheelset DC without rubber tyre	25883
84	Rueda sin aro AC Wheelset AC without rubber tyre	25884
85	Rueda sin engranaje DC Wheelset DC without gear	25885
86	Rueda sin engranaje AC Wheelset AC without gear	25886
87	Set tornillo y terminal Terminal and screw set	25887
88	Base bogie motriz Motor bogie lid	25888D
89	Tornillo base bogie motriz Motor bogie lid screw	25889
90	Base bogie central Central bogie lid	25890D
91	Tornillo base bogie central Central bogie lid screw	25891
92	Contacto rueda Wheel contact	25892
93	Aro de adherencia Rubber tyre	25893
94	Patín AC AC pick up shoe	6952
95	Tornillo patín AC AC pick up shoe screw	6953
96	Soporte contacto luz Light contact support	25896D
97	Soporte contacto pantógrafo Pantograph contact support	25897D

